

## **Georgia Department of Transportation**

# **Automated Traffic Signal Performance Measures Installation Manual**

Prepared for:



Georgia Department of Transportation  
600 West Peachtree Street, NW  
Atlanta, Georgia 30308

Prepared by:

# **ATKINS**

Atkins North America  
1600 RiverEdge Parkway, NW Suite 600  
Atlanta, GA 30328

Special Thanks to the Utah Department of Transportation:



8/12/2022

<b>Document Control Panel</b>	
File Name:	ATSPM_Installation_Manual.docx
Version No.:	4.5
Created By:	Philip Blaiklock, Atkins
Date of First Submission:	
Updated By:	Derek Lowe, Morgan Stanley
Client Comments Received:	

<b>Revision History Control Panel</b>		
CREATED BY:	Philip Blaiklock, Atkins	
	David Bremer, Atkins	
	Brian Ritchson, Atkins	
REVIEWED BY:	Ron Meyer, Atkins	12/13/2016
TECHNICAL REVIEW:	Mark Taylor, UDOT	
	Jamie Mackey, UDOT	
	Shane Johnson, UDOT	
	Derek Lowe, UDOT	
MODIFIED BY:	Andre Sanchez, UDOT	4/18/2019
	Derek Lowe & Morgan Stanley, Avenue	8/12/2022
COMPLETED BY:		

# Table of Contents

Introduction.....	1
1. Prerequisites.....	1
1.1. Server Requirements.....	1
1.2. Other Requirements.....	2
2. New Install Procedure.....	2
2.1. Create the Website using IIS.....	2
2.2. Launch Website and Populate Database .....	4
2.3. Set up Regions .....	5
2.4. Set up User Accounts .....	6
2.5. Configure Signals, Approaches, and Routes .....	6
2.6. Configure the “Generate Add Data Script” Component .....	7
2.7. Create Web Services.....	9
2.8. Install “Left Turn Gap Report” API.....	10
2.9. Install the “Import Controller Logs” Component(s) .....	11
2.10. Install the “Decode and Import” Component(s).....	12
2.11. Install the “Speed Listener” Component.....	14
2.12. Install the ATSPM Watchdog Component.....	15
2.13. *This component has been deprecated in this version. Install the ATSPM Data Aggregation Component.....	16
2.14. Install the Import Checker Component.....	16
2.15. Configure Menus.....	17
3. Configuring the New System and Database.....	18
3.1. Verify the Website.....	18
3.2. Verify the Key Tables in the Database .....	19
3.3. Verify the Regions.....	19
3.4. Verify the User Accounts.....	19
3.5. Verify the Signals, Approaches, and Routes .....	19
3.6. Verify the “Generate Add Data Script” .....	19
3.7. Verify WCF Services .....	19
3.8. Verify the “Import Controller Logs” .....	20
3.9. Verify the “Decode and Import” Components.....	20

3.10.	Verify the “SpeedListener” Component .....	20
3.11.	Verify the ATSPM Watchdog Component.....	21
3.12.	Configure the New Menus.....	21
3.13.	Set Raw Data Export Limit .....	21
3.14.	Enable Google Analytics .....	21
4.	Update From Version 4.0 or 4.1.....	21
4.1.	Backup the database before starting the upgrade.....	21
4.2.	Update Database.....	22
4.3.	Update the Website:.....	24
4.4.	Update the “Generate Add Data Script” Component .....	24
4.5.	Update Web Services .....	24
4.6.	Update the “Import Controller Logs” Component(s) .....	24
4.7.	Update the “Decode and Import” Component(s) .....	24
4.8.	Update the “Speed Listener” Component.....	25
4.9.	Update the ATSPM Watchdog Component.....	25
4.10.	*This component has been deprecated in this version. Install the Data Aggregation Component.....	25
4.11.	Install the Import Checker Component.....	25
4.12.	Fix Routes.....	26
4.13.	Add new roles.....	26
4.14.	Additional configuration .....	26
5.	Updating to Version 4.3.....	26
5.1.	Follow steps 4.1–4.9, 4.11 .....	26
5.2.	Install the “Left Turn Gap Report” API .....	26
6.	Database Archive Settings (For Partitioned Tables Only) .....	27
6.1.	There are Several Tables for This Process.....	27
6.2.	Initial Setup and Editing of These Tables.....	27
6.3.	Functions and Stored Procedures .....	28
Appendix A.	Wavetronix SmartSensor Advance Configuration .....	30
Appendix B.	How to add a new measure.....	33

## List of Figures

Figure 1: Configure ATSPM Application in IIS.....	3
Figure 2: Folder permissions.....	4
Figure 3: Checking tables in SQL Server Management Studio.....	5
Figure 4: Set up regions in SQL Server Management Studio.....	6
Figure 5: Task trigger setup.....	8
Figure 6: Customize web addresses for the Links menu.....	18
Figure 7: Verifying the WCF Service.....	20
Figure 8: Wavetronix Serial to Ethernet setup.....	31
Figure 9: Wavetronix SmartSensor Advance Setup.....	32

## List of Tables

Table 1: Controller and Component logs to install.....	11
Table 2: Decode and Import components to install.....	12
Table 3: Controller and action pairs for menu configuration.....	18

## List of Acronyms and Abbreviations

ATSPM	Automated Traffic Signal Performance Measures
GDOT	Georgia Department of Transportation
MOE	Measures of Effectiveness
UDOT	Utah Department of Transportation

# Introduction

This is the first of three documents that comprise the full Georgia Department of Transportation (GDOT) Automated Traffic Signal Performance Measures (ATSPM) documentation package.

Together, the three documents detail the installation and use of the Automated Traffic Signal Performance Measures website, including site navigation, reporting components, and report interpretation. This document provides detailed instructions on how to configure and install the ATSPM.

## 1. Prerequisites

### 1.1. Server Requirements

These installation procedures assume that the environment is prepared to the following specifications.

- Windows Server 2008 or newer installed
- .NET 4.5.2 Framework installed. Earlier or later versions of .NET Framework are not supported.
  - In Server 2012, this is installed using **Add Features** under **Server Manager**.
    - When adding the .NET framework, ensure that **HTTP Activation** and **TCP Port Sharing** are also installed.
  - In Server 2008, .NET 4.5.2 is a separate download and install.
    - Make sure WCF Activation and HTTP Activation are enabled. These are available in **Server Manager, Features > Add Features** as features for .NET Framework 3.5.1.
- IIS 7 or later installed, along with ASP.NET 4.0 or later
  - In Windows Server, IIS is installed using Add Roles (Server 2008 or later).
  - When adding the IIS role:
    - Ensure ASP.NET 4.0 or later is included. In Server 2008 or later, this is found under **Web Server (IIS) > Web Server > Application Development** when adding IIS.
  - For Server 2008: When the Web Server (IIS) role is added, make sure all the IIS **Management Tools** below it are also installed.
- Firewall exceptions for connections to the controllers
- SQL Server or SQL Server Express 2012 or later installed along with Management Studio.
  - When installing SQL Server & Management Studio:
    - Install a **Default Instance**.
    - Use NT AUTHORITY/NETWORK SERVICE for SQL Server Database Engine.
    - For Account Provisioning, select **Windows Authentication Mode**. Select a Windows account to serve as a SQL Server Administrator.
  - Set up a common account to access the database:
    - Log in via SQL Server Management Studio. Use your Windows authentication and your account.

- Go to **Security > Logins** and create a new “SQL Server” login for the database. Name it “atspm,” or similar, and assign a password. Under **Server Roles**, select **dbcreator** along with **public**. Use defaults for all other settings of the new Login.
- Right click the server, select **Properties > Security**. Ensure that “SQL Server and Windows Authentication mode” is selected.
- If Watchdog features are desired, installation requires access to an SMTP (email) server. It will accept email from the automated traffic signal performance measures (ATSPM) server. The SMTP server can reside on the same machine that hosts the ATSPM website.
- Microsoft Visual Studio 2013 or later is recommended.

## 1.2. Other Requirements

- Your organization must have a Microsoft Bing Maps key. For information on obtaining one, please visit: <https://www.bingmapsportal.com/>

## 2. New Install Procedure

Following these steps will install the Utah Department of Transportation (UDOT) ATSPM software on a server with no previous SPM installation. Typically, all components are installed in the same server, but individual components may be housed in different locations on the network. There must be one folder on the server or network that is shared to both the website and the location of the web services. This folder path is used to store chart images and is specified during the website installation process in section 2.1.

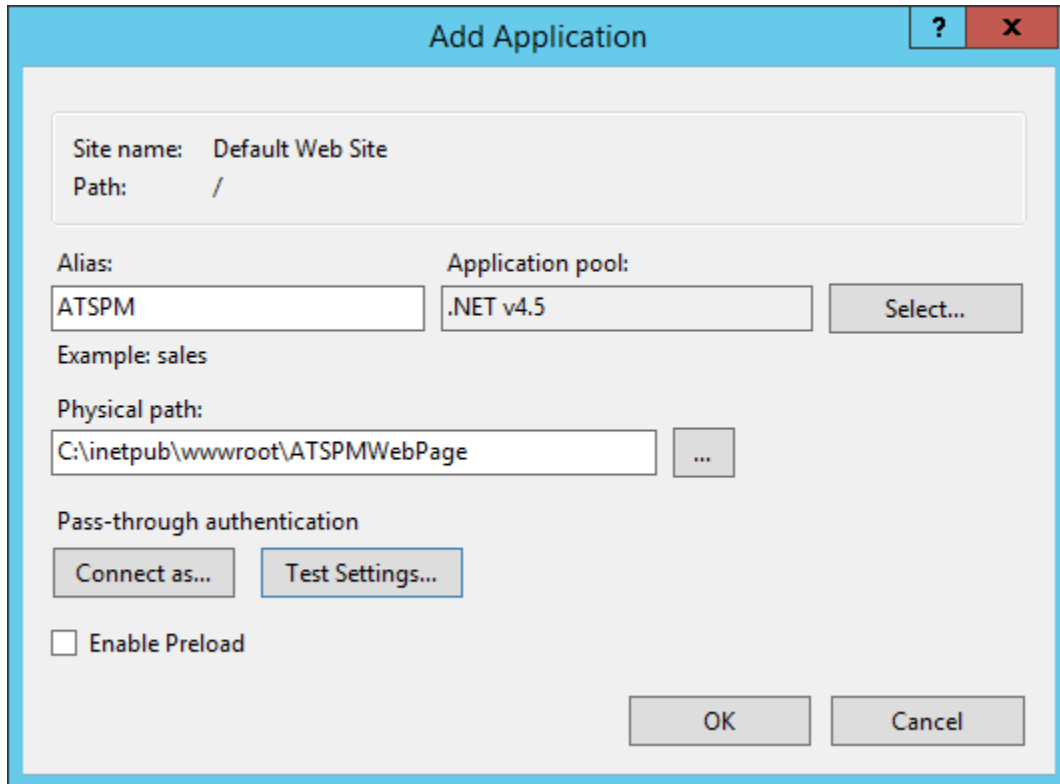
### 2.1. Create the Website using IIS

The website installation is the first step needed to install SPM. Once installed, a website tool will set up the database.

1. Create a folder for the website files. To do this, copy the SPM folder from the “\ATSPM Executables” folder in the installation media, into C:\inetpub\wwwroot.
2. Set up a shared folder to host website images:
  - a. Create folder “SPMImages” at the C:\ root, or other desired location.
  - b. Right click the folder and select **Properties > Security**.
  - c. Click **Edit** then **Add**.
  - d. On the **Select Users or Groups** dialog, enter object names **IUSR** and **IIS\_IUSRS**. These will source from machine name of the server.
  - e. Change the **location** to the top network domain. Then enter object name “Everyone.” Click **OK**.
  - f. These users should now have the default read permissions on the “SPMImages” folder.
3. Add ATSPM as a new application in IIS (Figure 1):
  - a. Open IIS. Expand {Computer name} > Sites > Default Web Site. The ATSPMWebPage

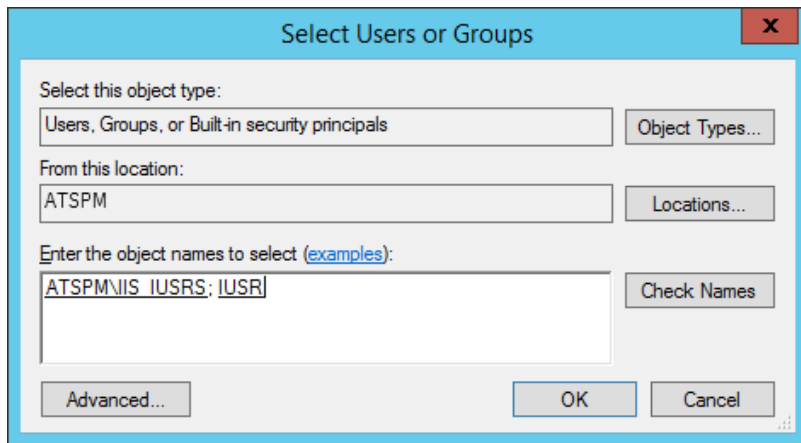


- folder should be listed.
- Right click **Default Web Site** and select **Add Application**. Give the application a descriptive **Alias**.
  - Set the **Physical Path** to the website folder created within wwwroot.
  - Set the Application pool to ASP.NET v4.0, or to an equivalent app pool with CLR version 4.0 or later and Integrated Pipeline mode.



**Figure 1: Configure ATSPM Application in IIS**

- Add IUSR and IIS\_IUSRS roles to the website physical path folder (Figure 2):
  - Right click the folder and select **Properties > Security**.
  - Click **Edit** then **Add**.
  - On the **Select Users or Groups** dialog, enter object names **IUSR** and **IIS\_IUSRS**. These will source from the name of the machine.
  - Grant each the default read permissions.



**Figure 2: Folder permissions**

5. Create the ATSPMImages application in IIS, underneath Default Web Site. Point the physical path to the shared images location created several steps above. Use the same Application Pool as the ATSPM application.
6. Edit the **web.config** file in the website physical path folder:
  - a. Set the database connection string:
    - i. Go to the <connectionStrings> block in web.config and edit the **SPM** connection string.
    - ii. Change **data source** to the machine the SQL is running on (localhost, if same machine).
    - iii. Set **initial catalog** to MOE. This is the name of the database that will be created.
    - iv. Set **User ID** and **Password** to the values created when the SQL Server was configured.

Here is an example:

```
<add name="SPM" connectionString="data source=localhost;initial catalog=MOE;Persist
Security Info=True;User
ID=atspm;Password=password;MultipleActiveResultSets=True;App=EntityFramework"
providerName="System.Data.SqlClient" />
```

## 2.2. Launch Website and Populate Database

1. Browse to the website. It should now be accessible from: <http://{domain}/{alias}>, where {domain} is your public web domain, and {alias} is the name chosen above for the ATSPM application in IIS.
2. Click **Register** and create a user account. Verify you can log in and out with this login.
3. Launching the website should automatically set up the MOE database (the "initial catalog" from the connection string).
4. Go to SQL Server Management Studio, log into the server, and check that the MOE database has been created.
5. Expand **Tables** within the MOE database, see Figure 3. Verify that several dozen tables have

been created. Right-click the **ControllerTypes** table and select the top 1000 rows. Verify that signal controllers have been populated.

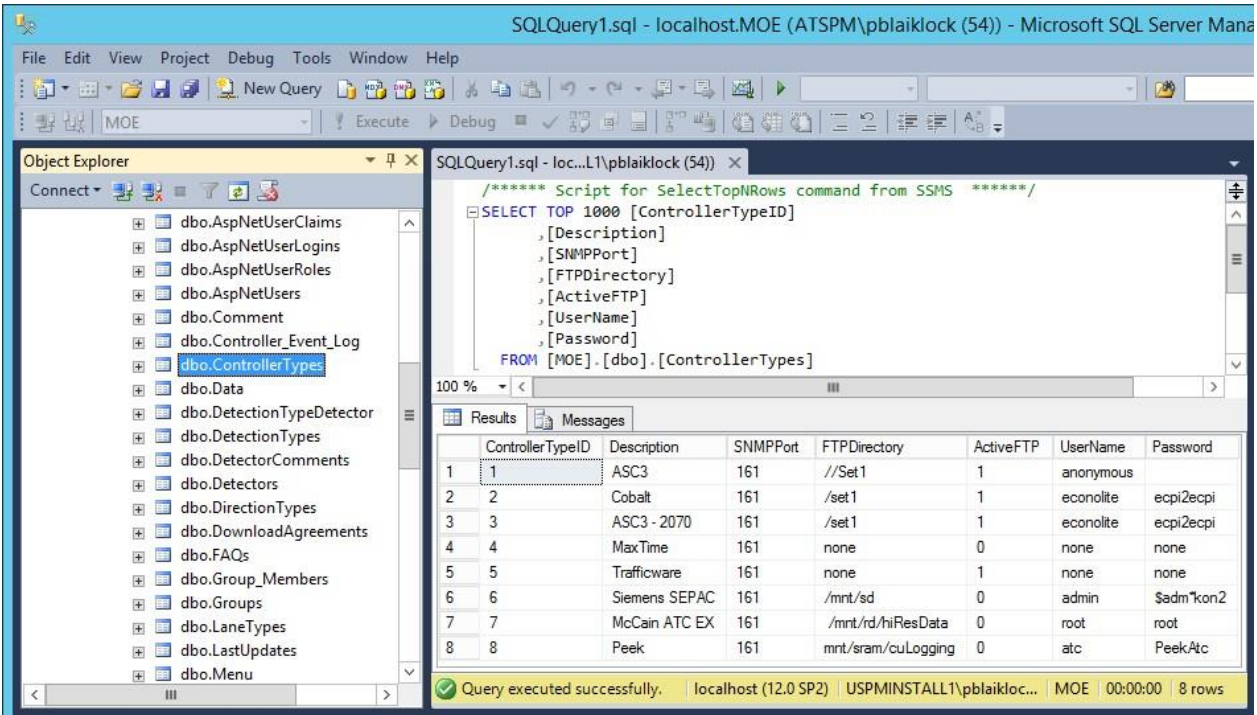


Figure 3: Checking tables in SQL Server Management Studio

### 2.3. Set up Regions

All signals within ATSPM are divided among geographical regions. These can be districts within a department of transportation or any other administrative division. By default, the ATSPM database is populated with five regions (four numbered, one other). It will be necessary to reconfigure these for the correct local jurisdictions by directly editing them using SQL Server Management Studio. To do so:

1. Log in to the server using SQL Server Management Studio; expand the MOE database and the **Region** table (Figure 4).
2. Right-click and select **Edit Top 200 Rows**.
3. Change the **ID** numbers and **Descriptions** (names) to reflect local jurisdictions.

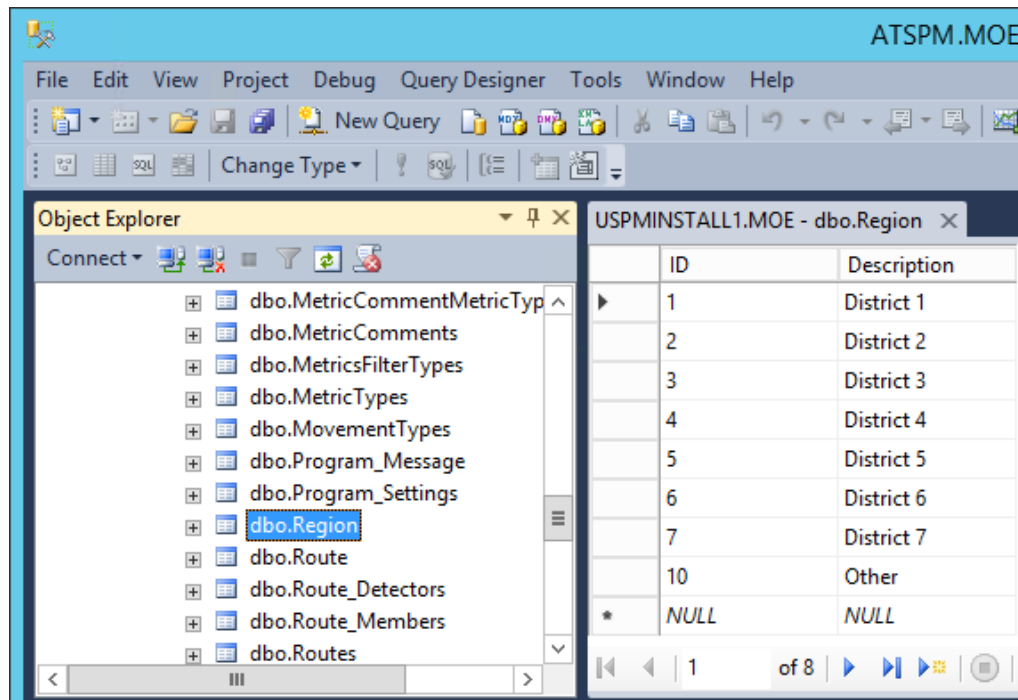


Figure 4: Set up regions in SQL Server Management Studio

## 2.4. Set up User Accounts

1. Click **Register** on the ATSPM website menu. Create a new account for yourself and any other individuals who will use ATSPM. Verify that the user account(s) can successfully log in to the website.
2. It will be necessary to create administrative accounts. To do so, log in using the default administrative account, which is:
  - Username: [defaultadmin@spm.gov](mailto:defaultadmin@spm.gov)
  - Password: L3tM3in!
3. Once logged in, change the password of the default administrative account. Click your email address in the top right corner of the screen, and then **Change your password**.
4. Go to **Admin > Roles**. Click **Add Role To User**.
5. Assign the appropriate role to any desired user.

## 2.5. Configure Signals, Approaches, and Routes

1. Log in using an administrative account (created in the previous section).
2. From the top menu, navigate to **Admin > Signal Configuration**.
3. Click **Create New Signal**. Enter a unique ID number for the signal. This will create the signal ID within the system database.
4. In the next page, enter the **Primary Name, Secondary Name, IP Address, Latitude, Longitude, Region**, and **Controller Type** for the signal. Also, choose a **Region** for the signal

(these should match those configured earlier).

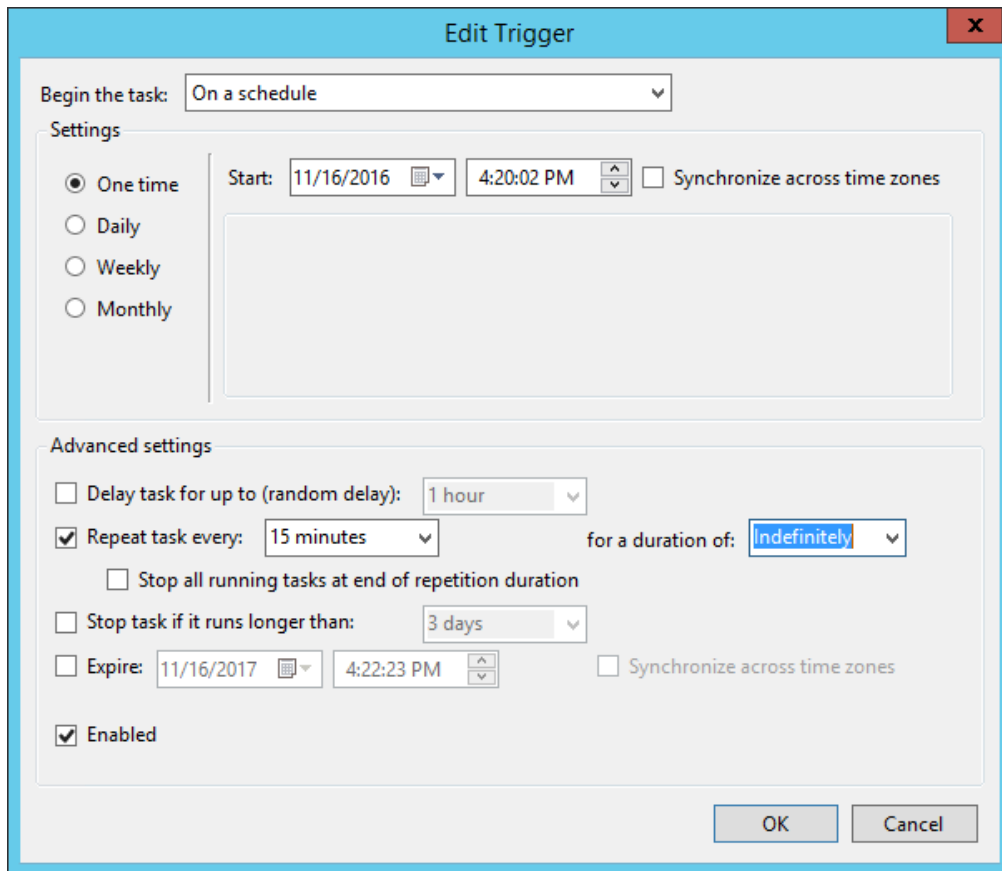
5. Click **New Phase/Direction** and add at least one approach for the signal, including detector(s).
6. For each approach, click **Detectors** and add any detector hardware.
7. Click **Save** to confirm.
8. Enter any applicable **Comments** for the signal, and check any applicable metrics that apply to the comment. Click **Create** to save the comments and supported metrics.
9. Configure additional signals by repeating the steps above.
10. Create routes (necessary to use the Purdue Link Pivot):
  - a. Navigate to **Admin > Route Configuration**.
  - b. Click **Create New** to begin entering routes utilizing the signal approaches previously created.
  - c. In the approach list that appears in the upper middle of the page designate a primary and opposing approach. No save is necessary.

## 2.6. Configure the “Generate Add Data Script” Component

The **Generate Add Data Script** application is a key website component. It must be scheduled to scan the database periodically and generate the AddData.js file. This JavaScript file contains geolocated information of each signal in the system, and is used by the map feature in SPM to place signal pins.

To set up this feature, perform the following steps:

1. Navigate to the “\ATSPM Executables\GenerateAddDataScript\bin\Release” folder in the installation media. Copy this folder to a suitable location (for example, the C:\ root).
2. Edit the GenerateAddDataScript.exe.config file in the destination folder.
  - a. Find the <connectionStrings> section. Change the “SPM” connection string to the same one used during website setup (see section 2.1 above).
3. Find the <appSettings> block. Change the location of the “Path1” key to the installed location of the website. For example, C:\inetpub\wwwroot\ATSPMWebPage\Scripts\AddData.js. Use **Windows Task Scheduler** to launch the application on a periodic basis:
  - a. Open Windows Task Scheduler and select **Create Task**.
  - b. On the **General** tab, give the task a suitable name. Run the task as the **SYSTEM** user. The task should be configured to run whether the user is logged in or not. On the **Triggers** tab, create a trigger to begin the task “On a schedule” to start at the current time. Then under **Advanced settings**, repeat it every 15 minutes indefinitely. See Figure 5.



**Figure 5: Task trigger setup**

- c. On the **Actions** tab, direct the task to run the GenerateAddDataScript executable.
  - d. On the **Settings** tab, check the option to run the task as soon as possible if a scheduled start is missed.
  - e. Click **OK**. The task should now be listed in the Task Scheduler pane. You may test the task at any time by clicking the **Run** command.
  - f. Check that the AddData.js file is updating periodically as expected.
  - g. If ATSPM is running on several different servers, you may copy and insert additional numbered Path keys (Path2, Path3, etc.) to update all servers with a single instance of the executable.
4. By default, the map will center over Utah. You may change this for the local area. To do so:
    - a. Open **Map.js** in a text editor. This file is in the same Scripts folder as AddData.js.
    - b. Within the GetMap() function:
      - i. Change the **credentials** to your organization's Bing maps key.
      - ii. Find the line starting with "**center:**". Change the latitude and longitude in Microsoft.Maps.Location() to correspond to the desired location.
    - c. Within the GetMapWithCenter() function:
      - i. Change the **credentials** to your organization's Bing maps key.

## 2.7. Create Web Services

It is necessary to install web services utilized by the SPM website. These are the Metric Generator and Link Pivot Service. Follow these steps:

1. Copy the \ATSPM Executables\MOEWcfServiceLibrary folder in the installation media, to C:\inetpub\wwwroot.
2. Edit the **web.config** file in the website physical path folder:
  - a. Set the database connection string:
    - i. Go to the <connectionStrings> block in web.config and edit the **SPM** connection string.
    - ii. Change **data source** to the machine the SQL is running on (localhost, if same machine).
    - iii. Set **initial catalog** to MOE (if that is the name of the Database you have set up).
    - iv. Set **User ID** and **Password** to the values created when the SQL Server was configured.  
Here is an example:

```
<add name="SPM" connectionString="data source=localhost;initial catalog=MOE;Persist Security Info=True;User ID=atspm;Password=password;MultipleActiveResultSets=True;App=EntityFramework" providerName="System.Data.SqlClient"
```

3. Add IUSR and IIS\_IUSRS roles to this new folder:
  - a. Right click the MOEWcfService folder and select **Properties > Security**.
  - b. Click **Edit** then **Add**.
  - c. On the **Select Users or Groups** dialog, enter object names **IUSR** and **IIS\_IUSRS**. These will source from the name of the machine.
  - d. Grant each default read permissions.
4. Install the services:
  - a. On the ATSPM website browse to Admin->Application Settings->General Settings:
    - i. Locate the **Image Path** text box. Change the file path to the shared SPMImages folder created earlier in this document. Be sure to include the trailing backslash.
    - ii. Locate the **Image Url** text box. Change it to the equivalent URL of images, linked to the shared image folder. Be sure to include trailing forward slash. The external URL is recommended; for example: http://mysite.com/SPMImages/
  - b. Create the **MOEWcfService** application in IIS, underneath Default Web Site. Point the physical path to the WCFWebServices folder created within wwwroot. Use the same Application Pool as the SPM application.
  - c. Browse to the Web.config corresponding to the main ATSPM website (in this case, C:\inetpub\wwwroot\ATSPMWebPage\web.config). Edit the file to correspond to the two new services:
    - i. Browse to the end of the file and locate the <client> block.
    - ii. Change the endpoint address for link pivot service to the equivalent URL. The

- external hostname is recommended; for example:  
<http://mysite.com/MOEWcfService/MOEWcfServiceLibrary.LinkPivotService.svc>
- iii. Change the endpoint address for the metric generator service to the equivalent URL. The external hostname is recommended; for example:  
<http://mysite.com/MOEWcfService/MOEWcfServiceLibrary.MetricGenerator.svc>
  - d. Set the ImagePath under Admin -> General Settings on the website to the absolute path of ATSPMImages. In this example, C:\ATSPMImages\. Be sure to include the trailing backslash.
  - e. Set **Image URL** under Admin -> General Settings on the website to the external URL of images, linked to the image folder from the last two steps. Be sure to include the trailing forward slash. The external URL is recommended; for example:  
<http://mysite.com/ATSPMImages/>
  - f. Test the services by generating charts (**Charts > Default Charts**) and the Purdue Link Pivot (**Charts > Purdue Link Pivot**).

## 2.8. Install “Left Turn Gap Report” API

This section describes installation of the API required for the Left Turn Gap Report.

1. Download the [ASP.NET Core 6.0 Runtime Windows Hosting Bundle](#).
2. Copy the \ATSPM Executables\ReportsApi folder in the installation media to C:\inetpub\wwwroot.
3. Edit the **appsettings.json** file in the website physical path folder:
  - a. Set the database connection string:
    - i. Go to the <connectionStrings> block in appsettings.json and edit the **SPM** connection string.
    - ii. Change **server** to the machine the SQL is running on (localhost, if same machine).
    - iii. Set **database** to MOE (if that is the name of the Database you have set up).
    - iv. Set **User ID** and **Password** to the values created when the SQL Server was configured.

Here is an example:

```
"ConnectionStrings": {
  "SPM": "Server=moeServer;Database=moe;Persist Security
Info=True;User ID=spm;Password=spm;MultipleActiveResultSets=True;"
},
```

4. Add IUSR and IIS\_IUSRS roles to this new folder:
  - a. Right click the ATSPM.Application.Reports folder and select **Properties > Security**.
  - b. Click **Edit** then **Add**.
  - c. On the **Select Users or Groups** dialog, enter object names **IUSR** and **IIS\_IUSRS**. These will source from the name of the machine.
  - d. Grant each default read permissions.



5. Install the services:
  - a. Create a new application pool in IIS.
    - i. Right click Application Pools
    - ii. Select Add Application Pool
    - iii. Name the Application pool reports
    - iv. Select **No Managed Code** under .NET CLR versions
    - v. Click OK
    - vi. Right click the Reports Application Pool
    - vii. Click Advanced Settings
    - viii. Change Identity to **Network Service**
    - ix. Click OK
  - b. Create the **Reports** application in IIS, underneath Default Web Site. Point the physical path to the ATSPM.Application.Reports folder created within wwwroot.
  - c. Set the application pool inside the application advanced settings to the **Reports** application pool.
  - d. Browse to the Web.config corresponding to the main ATSPM website (in this case, C:\inetpub\wwwroot\ATSPMWebPage\web.config). Edit the file to correspond to the new services:
    - i. Locate the <appSettings> block.
    - ii. Change the value of the setting with the ReportsUrl key to the equivalent URL. The external hostname is recommended; for example:  
<http://mysite.com/reports/>
  - e. Test the services by generating a Left Turn Gap Report (**Reports > Left Turn Gap Analysis**)

## 2.9. Install the “Import Controller Logs” Component(s)

This section describes installation of the components that retrieve logs from signal controllers. Table 1 specifies which component to install for each controller type. You only need to install components for the signal controller types that will provide data to the ATSPM system.

**Table 1: Controller and Component logs to install**

Signal Controller Type	Required Component to Retrieve Logs
MaxTime	GetMaxTimeRecords
All other types	FTPFromAllControllers

### 2.9.1. Install the “FTPFromAllControllers” component

1. Locate the \ATSPM Executables\FTPfromasc3\bin\Release folder in the installation media. Copy this folder to a suitable location (for example, the C:\ root).
2. Navigate to the destination folder and open FTPfromallcontrollers.exe.config in a text editor:
  - a. Change the **HostDir** to the local path in which you would like downloaded logs to be placed. Include the backslash at the end of the path. (A new folder on the C:\root is recommended, such as C:\DownloadedLogs\).

- b. Change the **SPM** connection string key to point to the database. Use the same string configured for previous components.
  - c. Before starting the application for the first time, set the **DeleteFilesAfterFTP** key to false. This key controls whether files are removed from the signal controller after being downloaded. This setting can be changed later (set to true) once this component and the overall system are working correctly.
3. In SQL Server Management Studio, log in to the server and review the contents of the **ControllerTypes** table. If necessary, edit the contents (username, password) to match the controllers in the field.
4. Create a scheduled task to run the executable with recurrence every 15 minutes for an indefinite duration. You may follow the scheduling instructions detailed previously for Generate Add Data Script.
5. Verify that logs are being retrieved from controllers via ftp and being added to the **HostDir** folder. The system automatically creates numbered subdirectories corresponding to the signal IDs configured in the database.

### 2.9.2. *Install the “GetMaxTimeRecords” Component*

1. Locate the \ATSPM Executables\AsyncGetMaxTimeRecords\bin\Release folder in the installation media. Copy this folder to a suitable location (for example, the C:\ root).
2. Navigate to the destination folder and open AsyncGetMaxTimeRecords.exe.config in a text editor:
  - a. Change the **SPM** key to point to the database. Use the same string configured for previous components.
3. Create a scheduled task to run the executable with recurrence every 15 minutes for an indefinite duration. You may follow the scheduling instructions detailed previously for Generate Add Data Script.
4. Verify that the tool is working correctly:
  - a. Check the **Controller\_Event\_Log** table in SQL Server Management Studio to ensure signal events have been incorporated.

## 2.10. Install the “Decode and Import” Component(s)

Table 2 specifies which log decoder to install for each controller type. You only need to install components for the signal controller types that will provide data to the ATSPM system.

**Table 2: Decode and Import components to install**

Signal Controller Type	Required Log Decoder
ASC3	DecodeAndImportASC3Logs
MaxTime	(No component necessary. The “GetMaxTimeRecords” component installed previously handles database import.)
Peek	DecodePeekLogs

Siemens	DecodeSiemensLogs
Trafficware	DecodeTrafficwareLogs

### 2.10.1. *Install the “DecodeAndImportASC3Logs” Component*

1. Locate the \ATSPM Executables\NewDecodeandImportASC3Logs\bin\Release folder in the installation media. Copy this folder to a suitable location (for example, the C:\ root).
2. Navigate to the destination folder and open NEWDecodeandImportASC3Logs.exe.config in a text editor:
  - a. Change the **ASC3LogsPath** to the local path that contains the downloaded logs. Be sure to include the closing backslash. (In this case, path is C:\DownloadedLogs\).
  - b. Change the **CSVOutPath** key to a local folder where decoded logs (CSV files) will reside. Be sure to include the closing backslash. (for example, C:\DecodedASC3Logs\).
  - c. Change the **SPMConnectionString** key to point to the database. Use the same string configured for previous components.
  - d. Before starting the application for the first time, set the **DeleteFile** key to false. This key controls whether downloaded controller logs are deleted after being decoded. This setting can be changed later (set to true) once this component and the overall system are working correctly.
3. Create a scheduled task to run the executable with recurrence every 15 minutes for an indefinite duration. You may follow the scheduling instructions detailed previously for Generate Add Data Script.
4. Verify that the tool is working correctly:
  - a. Check the **CSVOutPath** location for decoded files (note: this CSV output has to be enabled in the code, then the program recompiled in Visual Studio).
  - b. Also, check the **Controller\_Event\_Log** table in SQL Server Management Studio to ensure signal events have been incorporated.

### 2.10.2. *Install the “DecodePeekLogs” Component*

Retrieval and ingestion of information from Peek controllers is configured on a case-by-case basis. Consult a Peek representative for configuration of ATSPM deployments for use with Peek hardware.

### 2.10.3. *Install the “DecodeSiemensLogs” Component*

1. Locate the \ATSPM Executables\DecodeSiemensLogs\bin\Release folder in the installation media. Copy this folder to a suitable location (for example, the C:\ root).
2. Navigate to the destination folder and open DecodeSiemensLogs.exe.config in a text editor:
  - a. Change the **DecoderPath** key to the full path of the SiemensDecoder.exe file. (The path must include SiemensDecoder.exe). To obtain this executable, contact Siemens.
  - b. Change the **LogPath** key to the local path that contains the downloaded logs. Be sure to include the closing backslash. (In this case, path is C:\DownloadedLogs\).
  - c. Change the **CSVOutPath** key to a local folder where decoded logs (CSV files) will reside. Be sure to include the closing backslash (for example, C:\DecodedSiemensLogs\).

- d. Change the **SPMConnectionString** key to point to the database. Use the same string configured for previous components.
  - e. Before starting the application for the first time, set the **DeleteFile** key to false. This key controls whether downloaded controller logs are deleted after being decoded. This setting can be changed later (set to true) once this component and the overall system are working correctly.
3. Create a scheduled task to run the executable with recurrence every 15 minutes for an indefinite duration. You may follow the scheduling instructions detailed previously for Generate Add Data Script.
  4. Verify that the tool is working correctly:
    - a. Check the **CSVOutPath** location for decoded files.
    - b. Also, check the **Controller\_Event\_Log** table in SQL Server Management Studio to ensure signal events have been incorporated.

#### 2.10.4. *Install the “DecodeTrafficwareLogs” Component*

1. Locate the \ATSPM Executables\DecodeTrafficwareLogs\bin\Release folder in the installation media. Copy this folder to a suitable location (for example, the C:\ root).
2. Navigate to the destination folder and open DecodeTrafficwareLogs.exe.config in a text editor:
  - a. Change the **DecoderPath** key to the full path of the SiemensDecoder.exe file (The path must include SiemensDecoder.exe). To obtain this executable, contact TrafficWare.
  - b. Change the **TWLogsPath** key to the local path that contains the downloaded logs. Be sure to include the closing backslash (In this case, path is C:\DownloadedLogs\).
  - c. Change the **CSVOutPath** key to a local folder where decoded logs (CSV files) will reside. Be sure to include the closing backslash (for example, C:\DecodedTrafficWareLogs\).
  - d. Change the **SPM** connection string key to point to the database. Use the same string configured for previous components.
  - e. Before starting the application for the first time, set the **DeleteFile** key to false. This key controls whether downloaded controller logs are deleted after being decoded. This setting can be changed later (set to true) once this component and the overall system are working correctly.
3. Create a scheduled task to run the executable with recurrence every 15 minutes for an indefinite duration. You may follow the scheduling instructions detailed previously for Generate Add Data Script.
4. Verify that the tool is working correctly:
  - a. Check the **CSVOutPath** location for decoded files.
  - b. Also, check the **Controller\_Event\_Log** table in SQL Server Management Studio to ensure signal events have been incorporated.

## 2.11. Install the “Speed Listener” Component

Note: The Speed Listener only works with Wavetronix SmartSensor™ Advance, and only when the device is configured to deliver speed data. The Approach Speed Measure is the only metric which uses this data. Hardware setup steps specific to ATSPM are required; please see Appendix A in this document for

additional information.

1. Locate \ATSPM Executables\WavetronicsSpeedListener\bin\Release in the installation media. Copy this folder to a location where you want to store the Speed Listener Service Components (for example, the C:\ root).
2. Open a command prompt and use the "installUtil.exe" program to install the Speed Listener executable as a service. The location of the installUtil.exe can be different depending on your operating system version. The command, however, will look something like this:

```
c:\windows\microsoft.net\framework\v4.0.30319\installutil.exe  
C:\WavetronicsSpeedListener\WavetronicsSpeedListener.exe
```

3. Navigate to the destination folder and open WavetronicsSpeedListener.exe.config in a text editor. Change the **SPM** connection string key to point to the database. Use the same string configured for previous components.
4. Using the Services Control Panel, set the SpeedListener service to start automatically. Press the **Start** button to start the service.

## 2.12. Install the ATSPM Watchdog Component

The ATSPM Watchdog component must be installed and configured if email notification of system-wide events is desired. This component requires that an SMTP server be available for sending ATSPM emails; SMTP can be installed on the same machine that hosts the ATSPM website.

1. Locate the \ATSPM Executables\SPMWatchDog\bin\Release folder in the installation media. Copy this folder to a suitable location (for example, the C:\ root).
2. Navigate into the destination folder and open SPMWatchDogNew.exe.config in a text editor:
  - a. Change the **SPM** connection string key to point to the database. Use the same string configured for previous components.
  - b. Change the **EmailServer** key to the proper SMTP server. If the SMTP server is hosted on the same machine running watchdog, use the machine's network name.
  - c. The **ToAddress** field is optional. This address will always receive a copy of the watchdog email, in addition to the applicable addresses in the database.
3. Before running the Watchdog for the first time, ensure that the desired users are configured to receive emails. Currently this is managed by connecting directly to the database. To do so:
  - a. Open SQL Server Management Studio and log in to the server.
  - b. Find the **AspNetUsers** table in the MOE database. Right click it and edit the top 200 rows.
  - c. Set the **ReceiveAlerts** flag to 1 for the user(s) who will receive emails.
4. If desired, you may execute the program at this time. If it is working correctly, it will immediately send an email to the users(s) signed up for alerts.
5. Create a scheduled task to run the executable with recurrence every 24 hours for an indefinite duration. Watchdog by default scans between 1:00 and 5:00AM, and between 5:00 and 6:00PM the previous day. Hence, 7:00AM is highly recommended for scheduling WatchDog to have a

complete set of data. You may follow the scheduling instructions detailed previously for Generate Add Data Script.

## 2.13. **\*This component has been deprecated in this version.** **Install the ATSPM Data Aggregation Component**

The Data Aggregation component aggregates the ATSPM reports into 15 minute bins. If you want to be able to use the aggregation reports and export this executable must be installed and scheduled to run. It will run automatically for the last date/time in the database up to the previous day.

1. Locate the \ATSPM Executables\AggregateATSPMData folder in the installation media. Copy this folder to a suitable location (for example, the C:\ root).
2. Navigate into the destination folder and open AggregateATSPMData.exe.config in a text editor:
  - a. Change the **SPM** connection string key to point to the database. Use the same string configured for previous components.
  - b. Set the MaxThreads key under appSettings. The higher the number the heavier the load on the server but quicker it will run.
  - c. Set the BinSize key under appSettings. Default bin size is 15.
3. For the first time running this application you will need to specify a start and end date. Open a command prompt and enter the path to your executable. It should look something like this: C:\root\ AggregateATSPMData.exe 1/1/2014 2/1/2014
4. Create a scheduled task to run the executable with recurrence every 24 hours for an indefinite duration. This is a long running program that may run for several hours for a single day. This may slow your system and should be scheduled for a time when system usage is low. You may follow the scheduling instructions detailed previously for Generate Add Data Script.

## 2.14. **Install the Import Checker Component**

The Import Checker can be set to run every few minutes and send email notifications if it does not see new records in the database or if it cannot reach the database. This component requires an SNMTP server to run.

1. Locate the \ATSPM Executables\ImportChecker\bin\Release folder in the installation media. Copy this folder to a suitable location (for example, the C:\ root).
2. Navigate into the destination folder and open ImportChecker.exe.config in a text editor:
  - a. Change the **SPM** connection string key to point to the database. Use the same string configured for previous components.
  - b. Set the ListenerServer key under appSettings. This should be the name of the server where the Speed listener resides
  - c. Set the ListenerServiceName key under appSettings. This is the name of the service on the server where it runs.
  - d. Set the ToAddress key under appSettings. This is a semicolon separated list of email address that should receive the alerts.
  - e. Set the FromAddress key under appSettings. This can be either a real email address or a

- fake email address that shows in the from line in the alert emails
    - f. Set the EmailServerkey under appSettings. This is the server name or IP address of the SNMP server
  3. Create a scheduled task to run the executable with recurrence every 30 minutes for an indefinite duration. You may follow the scheduling instructions detailed previously for Generate Add Data Script.

## 2.15. Configure Menus

The final step of installation is to customize menus. To do so, go to **Admin > Menu Configuration**.

The **Menu Configuration** screen lists all menu items available in this installed instance, including nested items. To create a new menu item, click **Create New**. To edit an existing menu item, click **Edit**. To delete an existing item, click **Delete**. To view details of an existing item, click **Details**.

Using these commands, it is possible to edit and view parameters of each menu item. These parameters are:

- **MenuId:** A unique, numeric ID (starting at 1) identifying the menu item. This number has no relation to the ordering or hierarchy of the item.
- **MenuName:** The displayed name of the menu item
- **ParentId:** For nested menu items, this is the MenuId of the parent command. For top-level menu commands, the ParentId is 0.
- **DisplayOrder:** A number designating the order the menu item appears in its hierarchy level. The number increases from left to right for top-level menu items, and from top to bottom for nested items.
- **Controller:** The name of the software controller in the ATSPM website the command uses. The available controllers are detailed in Table 3 below. This is not to be confused with the hardware controller.
- **Action:** The action invoked within the controller to complete the menu command. The available actions, sorted by parent controller, are detailed in Table 3 below.
- **Application:** The main ATSPM web application as named in IIS; for example, SignalPerformanceMetrics. This will be the same for all menu items in the system.

Note that web hyperlinks on the **Links** menu must be manually added in the database. These can only be added to the bottom of the Links menu. The rest of the Links menu and submenus are configured as described above.

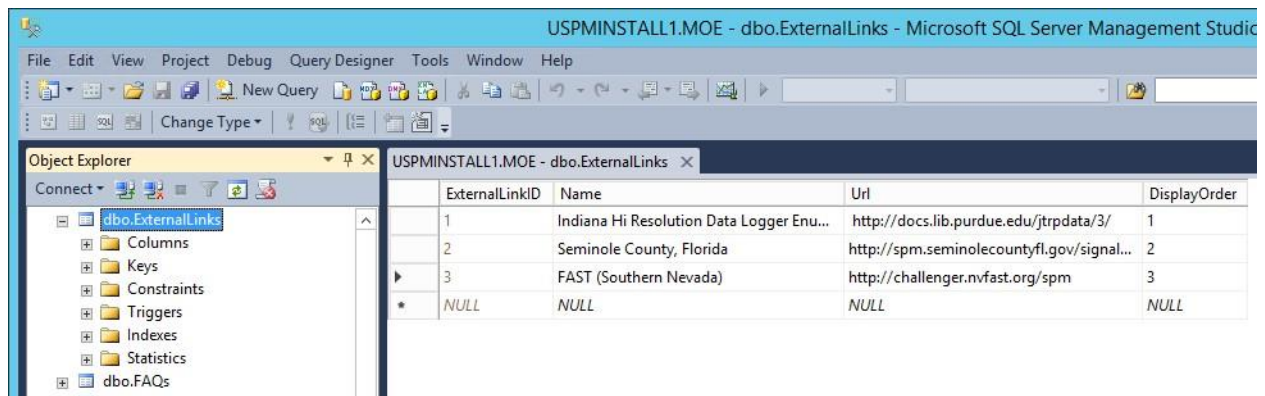
To configure web hyperlinks on the Links menu:

- Open SQL Server Management Studio, log in to the server, and navigate to the **ExternalLinks** table in MOE.
- Right-click the table and select **Edit Top 200 Rows**.

- Add, modify, or remove URLs as needed; see Figure 6 below.
  - **ExternalLinkID** is automatically populated when a new URL is added.
  - **Name** is the name of the link as it will appear on the menu.
  - **Url** is the complete web address, starting with http://.
  - **DisplayOrder** controls the ordering of the links at the bottom of the Links menu.

**Table 3: Controller and action pairs for menu configuration**

Controller	Action	Function
#	#	Spawn another menu level within the current level
Account	RoleIndex	Account role configuration
ActionLogs	Create	Log Action Taken
ActionLogs	Usage	Chart usage report
Approach Routes	Index	Route configuration screen
DefaultCharts	Index	The main signal performance measures (excluding Purdue Link Pivot)
FAQs	Display	Frequently asked questions list
Home	About	ATSPM “About”, or welcome, page
Images	(a filename)	Display the file (PDF, image, etc) in web browser
Link Pivot	Analysis	Purdue Link Pivot
Signals	Index	Signal configuration screen



**Figure 6: Customize web addresses for the Links menu**

## 3. Configuring the New System and Database

### 3.1. Verify the Website

Copy the folder “SPM” to the web server. It is normally under Inetpub\wwwroot. The drive is where IIS has installed Inetpub. Each target site may have one or more nested levels under this folder for “SPM”. This may be listed as “ATSPM” or “SPM”. It depends on how the application was created in section 2.1.



The web.config file will need to be edited for the correct connection string.

A quick check to ensure it is installed, can be done by launching the SPM (ASPM) website from another computer. Log in as the Administrator. Click on “Admin”, then on “Application Settings”. There should be three choices at his level. Repeat this step until the new web site is displayed.

### **3.2. Verify the Key Tables in the Database**

Check that all 67 tables are in the database as listed in section 4.2. If there is a problem with these tables not in the database, check for errors in any log and error files for the database. Correct these problems and re-run “ConvertDBForHistoricalConfigurations”. The updated system will not run correctly unless all the tables are in the database.

### **3.3. Verify the Regions**

The region table should not have changed. Make sure the regions are set up as they were before. If they are different, reconfigure this table, as it was set up for the initial setup in section 2.3.

### **3.4. Verify the User Accounts**

Check the users and accounts that were setup in the initial installation of “ATSPM”. Verify that the different users can successfully log in. Also make sure that there is an administrative account and that it can also log in. Check the security roles of each user.

### **3.5. Verify the Signals, Approaches, and Routes**

Check the signals, approaches, and routes. If needed add any new signals, approaches, and routes as per section 2.5. If updating from a previous version, check to make sure these items should not have changed during the upgrade process. If these have changed or not present, then use the backup tables from section 4.1. These are necessary for ATSPM to properly work.

### **3.6. Verify the “Generate Add Data Script”**

Copy the folder “AddDataScriptGenerator”, to the default web site. Edit the GenerateAddDataScript.exe.config file in the destination folder. Follow the steps in step 2.6 to change the required parameters for the target site. Also check the Windows Task Scheduler to run every 15 minutes. Check the folder as listed in the “PathX” section of the GenerateAddDataScript.exe.config file. There should be two files: “AddRouteData.js” and “AddData.js”, that are updated every 15 minutes.

### **3.7. Verify WCF Services**

To verify the WCF Service, open IIS Manager. Click the WCFService application. Click on the Content view tab (located at the bottom of the window). Right click on one of the .svc files and select “Browse.”

You should see a page similar to Figure 7 if the service is working correctly.

**MetricGenerator Service**

You have created a service.

To test this service, you will need to create a client and use it to call the service. You can do this using the svcutil.exe tool from the command line with the following syntax:

```
svcutil.exe http://avelt45.avenue.local/WCFService/MOEWcfServiceLibrary.MetricGenerator.svc?wsdl
```

You can also access the service description as a single file:

```
http://avelt45.avenue.local/WCFService/MOEWcfServiceLibrary.MetricGenerator.svc?singleWsdl
```

This will generate a configuration file and a code file that contains the client class. Add the two files to your client application and use the generated client class to call the Service. For example:

**C#**

```
class Test
{
    static void Main()
    {
        MetricGeneratorClient client = new MetricGeneratorClient();

        // Use the 'client' variable to call operations on the service.

        // Always close the client.
        client.Close();
    }
}
```

**Visual Basic**

```
Class Test
    Shared Sub Main()
        Dim client As MetricGeneratorClient = New MetricGeneratorClient()
        ' Use the 'client' variable to call operations on the service.

        ' Always close the client.
        client.Close()
    End Sub
End Class
```

**Figure 7: Verifying the WCF Service**

### **3.8. Verify the “Import Controller Logs”**

The Import Controller Logs will have to be reconfigured as in section 2.9. Again, only the component that matches the target system will need to be copied. Several of these components have changed, so follow the instructions in section 2.9 for further details.

### **3.9. Verify the “Decode and Import” Components**

The Decode and Import components have changed. Follow the instructions in section 2.10 using the new folders and copy them over the older ones.

### **3.10. Verify the “SpeedListener” Component**

If the target system has Wavetronix SmartSensor™ Advance, then section 2.11 should be followed to copy and configure the WavetronicsSpeedListener.exe.config. This service will need to be started automatically.

## **3.11. Verify the ATSPM Watchdog Component**

Check the configuration of the Watchdog component as listed in section 2.12. Only the connection string needs to be modified for the target system. The other items, 3, 4, and 5 are now performed by a web browser. Click on the Admin Menu, then on Application Settings. The first nested menu is “Watch Dog”. This will open a new screen, “Watch Dog Application Settings”. There are 15 different items that can be configured for the target site. Be sure to pay attention to the items on the lower part of the screen: Default Email Address, From Email Address, and Email Server. These three items need to be configured for emails to be sent to the users.

## **3.12. Configure the New Menus**

Follow section 2.15 to customize the menus for the target site. It is important to have a good understanding of the various menus and the pages they lead to before making any changes. Any menus leading to unused pages or components can be deleted if desired.

## **3.13. Set Raw Data Export Limit**

The new data export feature allows you to assign a data role to a user who can then go and download controller event log data in its raw format. In order to prevent users from bringing your database to a crawl, you need to specify a limit on how many records you will allow them to download at once. The default is 1,048,576 records. This is approximately 20 megabytes worth of data. Each row is about 20 bytes.

## **3.14. Enable Google Analytics**

- 3.14.1. If you want to enable Google Analytics you will need to sign up for a google analytics account. Once you have an account you can do the following:
  - 3.14.1.1. Obtain your Google Analytics ContainerId from google.
  - 3.14.1.2. Browse to the physical folder where the files for the ATSPM website are located.
  - 3.14.1.3. Open the file ATSPM\SPM\Views\Shared\\_Layout.cshtml with a text editor.
  - 3.14.1.4. Find each location in the file with the text  
GoogleAnalyticsContainerId.
  - 3.14.1.5. Relace the text with you Google Analytics Container Id.

# **4.Update From Version 4.0 or 4.1**

## **4.1. Backup the database before starting the upgrade**

If you are upgrading from version 4.0 or 4.1 , you will have to update the database tables. This is done by

the program “ConvertDBForHistoricalConfigurations”. Before doing this, a backup is highly recommended. The program loads configuration data into memory then deletes the data from the database so that the database structure can be deleted. If something interrupts this process it is possible to lose configuration data

If your Controller\_Event\_Logs, Speed\_Events, and ApplicationEvents tables are too large to be backed up you can create a temporary database and export all other tables.

## 4.2. Update Database

The ConvertDBForHistoricalConfigurations uses the credentials of the user to access the database. It needs admin level access to the database. You can also change the connection string in the ConvertDBForHistoricalConfigurations.exe.config file to use a SQL Server user to access the database.

Run ConvertDBForHistoricalConfigurations.exe from the installation media After running the ConvertDBForHistoricalConfigurations check that there are no errors with this conversion process. If Errors occurred correct any problems before proceeding. The database tables will need to be restored before the program can be run a second time. There are several new tables with this upgrade. Please verify the following tables are now in the database:

1. \_MigrationHistory
2. ActionLogActions
3. ActionLogMetricTypes
4. ActionLogs
5. Actions
6. Agencies
7. ApplicationEvents
8. Applications
9. ApplicationSettings
10. ApproachCycleAggregations
11. Approaches
12. ApproachPcdAggregations
13. ApproachRoute
14. ApproachSpeedAggregations
15. ApproachSplitFailAggregations
16. ApproachYellowRedActivationAggregations
17. Areas
18. AreaSignals
19. AspNetRoles
20. AspNetUserClaims
21. AspNetUserLogins
22. AspNetUserRoles
23. AspNetUsers
24. Comment
25. Controller\_Event\_Log

26. ControllerTypes
27. DatabaseArchiveExcludedSignals
28. DetectionHardwares
29. DetectionTypeDetector
30. DetectionTypeMetricTypes
31. DetectionTypes
32. DetectorComments
33. DetectorEventCountAggregations
34. Detectors
35. DirectionTypes
36. ExternalLinks
37. FAQs
38. Jurisdictions
39. LaneTypes
40. MeasureDefaults
41. Menu
42. MetricCommentMetricTypes
43. MetricComments
44. MetricsFilterTypes
45. MetricTypes
46. MovementTypes
47. PhaseCycleAggregations
48. PhaseLeftTurnGapAggregations
49. PhasePedAggregations
50. PhaseSplitMonitorAggregations
51. PhaseTerminationAggregations
52. PreemptionAggregations
53. PriorityAggregations
54. Region
55. RoutePhaseDirections
56. Routes
57. RouteSignals
58. SignalEventCountAggregations
59. Signals
60. SignalToAggregates
61. Speed\_Events
62. SPMWatchDogErrorEvents
63. StatusOfProcessedTables
64. TablePartitionProcesseds
65. ToBeProcessededIndexes
66. ToBeProcessededTables
67. ToBeProcessedTableIndexes
68. VersionActions

There are several other tables that were in a previous version that have been renamed or deleted. If there are more tables in the database, be sure you understand what the purpose of these tables are and why they are currently being used in your application.. Some of the tables are only used for subsets of the system. If the component using the table is not going to be used, the tables will remain small and can be ignored.

### **4.3. Update the Website:**

4.3.1. Copy the SPM folder from the “\ATSPM Executables” folder in the installation media, into C:\inetpub\wwwroot\{YourWebsitePhysicalFolder}

4.3.2. Follow the steps in 2.1.6 to update the configuration file.

### **4.4. Update the “Generate Add Data Script” Component**

4.4.1. Navigate to the “\ATSPM Executables\GenerateAddDataScript\bin\Release” folder in the installation media. Copy this folder to the existing location (for example, the C:\ root).

4.4.2. Follow the steps in 2.6.2 to update the configuration file.

### **4.5. Update Web Services**

4.5.1. Navigate to the “\ATSPM Executables\MoeWcfServiceLibrary” folder in the installation media. Copy this folder to the existing location (for example, the C:\ root).

4.5.2. Follow the steps in 2.7.2 to update the configuration file.

4.5.3. Follow the steps in 2.7.4 to update image location settings.

### **4.6. Update the “Import Controller Logs” Component(s)**

4.6.1. *Update the “FTPFromAllControllers” component*

4.6.1.1. Locate the \ATSPM Executables\FTPfromasc3\bin\Release folder in the installation media. Copy this folder to a suitable location (for example, the C:\ root).

4.6.1.2. Follow the steps in 2.8.1.2 to update the configuration file.

4.6.2. *Update the “GetMaxTimeRecords” Component*

4.6.2.1. Locate the \ATSPM Executables\AsyncGetMaxTimeRecords\bin\Release folder in the installation media. Copy this folder to a suitable location (for example, the C:\ root).

4.6.2.2. Follow the steps in 2.8.2.2 to update the configuration file.

### **4.7. Update the “Decode and Import” Component(s)**

4.7.1. *Update the “DecodeAndImportASC3Logs” Component*

- 4.7.1.1. Locate the \ATSPM Executables\NewDecodeandImportASC3Logs\bin\Release folder in the installation media. Copy this folder to a suitable location (for example, the C:\ root).
- 4.7.1.2. Follow the steps in 2.9.1.2 to update the configuration file.
- 4.7.2. *Update the “DecodePeekLogs” Component*
  - 4.7.2.1. Retrieval and ingestion of information from Peek controllers is configured on a case-by-case basis. Consult a Peek representative for configuration of ATSPM deployments for use with Peek hardware.
- 4.7.3. *Update the “DecodeSiemensLogs” Component*
  - 4.7.3.1. Locate the \ATSPM Executables\DecodeSiemensLogs\bin\Release folder in the installation media. Copy this folder to a suitable location (for example, the C:\ root).
  - 4.7.3.2. Follow the steps in 2.9.3.2 to update the configuration file.
- 4.7.4. *Update the “DecodeTrafficwareLogs” Component*
  - 4.7.4.1. Locate the \ATSPM Executables\DecodeTrafficwareLogs\bin\Release folder in the installation media. Copy this folder to a suitable location (for example, the C:\ root).
  - 4.7.4.2. Follow the steps in 2.9.4.2 to update the configuration file.

## **4.8. Update the “Speed Listener” Component**

- 4.8.1. Locate \ATSPM Executables\WavetronicsSpeedListenerbin\Release in the installation media. Copy this folder to a location where you want to store the Speed Listener Service Components (for example, the C:\ root).
- 4.8.2. Follow the steps in 2.10.3 to update the configuration file.

## **4.9. Update the ATSPM Watchdog Component**

- 4.9.1. Locate the \ATSPM Executables\SPMWatchDog\bin\Release folder in the installation media. Copy this folder to a suitable location (for example, the C:\ root).
- 4.9.2. Follow the steps in 2.11.3 to update the configuration file.

## **4.10. \*This component has been deprecated in this version. Install the Data Aggregation Component**

- 4.10.1. Follow the instructions in 2.13 to install this component

## **4.11. Install the Import Checker Component**

- 4.11.1. Follow the instructions in 2.14 to install this component

## **4.12. Fix Routes**

- 4.12.1. The new route system requires that a primary and opposing approach be marked for each signal. The database conversion marks the primary approach, but you will need to mark the opposing approach manually. The opposing approach is required for the Purdue Link Pivot report to run successfully. On the ATSPM Website Navigate to Admin->Route Configuration and click on edit next to a route.
- 4.12.2. Click on a signal in the list of signals in the upper left corner.
- 4.12.3. In the approach list that appears in the upper middle of the page designate a primary and opposing approach. No save is necessary.

## **4.13. Add new roles**

There are 2 additional security roles with version 4.2. The Data role and the Configuration role. These roles need to be configured.

- 4.13.1. On the ATSPM Website Navigate to Admin ->Roles and click on the Roles link at the top of the page.
- 4.13.2. If you do not see the Data and Configuration roles in the list of roles click the link Create New Role at the top of the page.
- 4.13.3. Type Data in the Role Name box and click Save.
- 4.13.4. Type Configuration in the Role Name box and click Save.

## **4.14. Additional configuration**

- 4.14.1. Follow steps in 3.13 and 3.14 for new configurations specific to ATSPM version 4.2.

# **5.Updating to Version 4.3**

## **5.1. Follow steps 4.1-4.9, 4.11**

Several additional tables will be added to the database. Refer to 4.2 for the list of tables you should have after updating.

## **5.2 Install the “Left Turn Gap Report” API**

Follow step 2.8 to install the “Left Turn Gap Report” API on your server.



## **6. \*This component has been deprecated in this version. Database Archive Settings (For Partitioned Tables Only)**

### **6.1. There are Several Tables for This Process**

- DatabaseArchiveExcludedSignals
  - List of Signals to be saved and not deleted
- StatusOfProcessedTables
  - A detailed log of the actions done against the database during the archive process
- TablePartitionProcesseds
  - A list of the tables that are partitioned and swapped out with a timestamp, ancillary information about this partition
- ToBeProcessedTables
  - A list of the tables that are partitioned with additional information about the table used to create a new table, and preserve that events for the list of signals listed in the Database Archive Excluded Signals
- ToBeProcessedTableIndexes
  - A list of the Indexes for the tables that are partitioned

### **6.2. Initial Setup and Editing of These Tables**

- DatabaseArchiveExcludedSignals
  - This table is edited by the Traffic Engineer on the ATSPM web screen. Click on Admin, then on Application Settings, and finally on Database Archive Settings. Add the signals that are to be preserved during the Archive process. Only the website should be used to make changes to this table.
- StatusOfProcessedTables
  - Initially, this table is empty.
  - This is a read only table with the different steps that have been completed during the archive process. It is used as a trouble shooting aid, showing what the next step that will be processed during an unattended job process. (It should be purged and not allowed to grow unattended as it contains a verbose listing of the steps followed during the Archive Process.)
- TablePartitionProcesseds
  - Initially, this table is empty.
  - This table contains additional information about the partitioned tables

and the different tables that are swapped out. It lists the FileGroup Name as well as the Physical File Name. (It too should be purged, but it will not grow as quickly as the StatusOfProcessedTables.

- ToBeProcessedTables
  - This table needs to have a list of the tables that are partitioned. It is pre-populated during the upgrade process.
  - There are two columns that can be modified by the SQL Server Management Studio. One is “DataBaseName”. It contains the name of the database for each table. For Udot, the name is MOE. The other column name is “Verbose”. A one means that each step of the process for reclaiming dataspace will be listed in the “StatusOfProcessedTables”. A zero will create a minimum listing for the table. The default is on or a one. The other columns contain the default values for the tables in use at UDOT.
  - UDOT has two tables that are partitioned: “Controller\_Event\_Log” and “Speed\_Events”. They use the same Partition Function and Partition Scheme. This means that both tables are in the same OS file. Care must be used when changes are made to the OS file, so that neither table becomes corrupt.
- ToBeProcessedTableIndexes
  - This table contains information about the indexes used by each table. These indexes must be create for a table to be swapped out. Nothing needs to be done to this table.
- ApplicationSettings
  - The values in this table are edited by the administrator under the “Admin”, “Application Settings”, “Database Archive Settings”. There is one exception and that is the column Archive Path. This is the location of where a flat file is written before any changes are made to the partitioned (swapped out) table.

## 6.3. Functions and Stored Procedures

- There are several Stored Procedures installed with the database upgrade
  - CreateConstraints
  - CreateIndexes
  - CreateTable
  - DoTheSwapTable
  - PreserveData
  - ProcessTables
  - VerboseStatus
- There are several Scalar-valued Functions installed with the database upgrade
  - DatabaseFileName
  - FileGroup

- IndexName
  - IndexNameClustered
  - IndexNameColumns
  - InsertValues
  - LowerBoundary
  - PhysicalFileName
  - StopCounter
  - TableName
  - UpperBoundary
- If these “Stored Procedures” or “Functions” are not present in the database, then the Database Archive System will not run and will cause run time errors. These can be seen by clicking on the Programmability Folder under the database.
  - There is one job that is created during the database upgrade.
    - “Reclaim Data Space”. The Jobs are located under the SQL Server Agent for Server, not the database. All databases use the same SQL Server Agent.
    - Right clicking on this job, and then on Properties, will allow different settings. The default time to start is the first Friday of the month at 9:00 PM. This job is scheduled to run against the MOE database. Other items, such as Alerts or Notifications can be setup or changed on the “Job Properties” window from SQL Server Management Studio.

# Appendix A. Wavetronix SmartSensor Advance Configuration

In order to use a Wavetronix SmartSensor Advance with the ATSPM Speed Listener, it is necessary to configure the hardware to communicate with the system. There are two components of relevance to ATSPM, a Serial to Ethernet converter and the SmartSensor Device itself. UDOT has used the DIGI PortServer TS 4 serial to Ethernet converter (aka “Digi”) in order to retrieve speed data from the Wavetronix SmartSensor Advance; however, other serial to Ethernet converters may work as well.

This appendix only covers configuration specifically related to ATSPM connection using Digi PortServers. For further information on SmartSensor configuration, please contact Wavetronix.

## A.1. Serial to Ethernet Converter Configuration

Configure each port pushing speed data on the Digi as follows:

Set the Port Profile to either TCP or **UDP Sockets** (Select **Change Profile** to make a change). TCP sockets are preferred as they are more secure, more reliable and are native to the Wavetronix Advance and Matrix SmartSensors (as they are written around TCP internet protocols).

### TCP:

1. Under the TCP Server Port Security Settings, check the box **Only allow network access from the following devices or networks**. In the **IP Address:** box, type in the IP address of the server to receive the data. Under the Advanced Serial Settings **Terminal Type:** box, type in “vt100”, enable **Verbose connection status message** and enable **Enable RTS Toggle** with 0 ms for both Pre-delay and Post-delay.
2. Click the **Apply** button.

### UDP:

1. Under the UDP Client enter the following settings: In the **Send data to:** box, type the name of the SPM server in **Description**, its IP address in **Send To**, “10088” in **UDP Port**, then click the **Add** button. Both this IP address and port must be publicly accessible.
2. Check the **Send data when the following string is found** checkbox, and select the **Custom string** radio button. In the text box underneath **Custom string**, type “\r\r”.
3. Clear the **Send data after the following number of idle milliseconds** checkbox.
4. Click the **Apply** button.

Send data to:

Description	Send To	UDP Port	
SERVERNAME	192.168.0.0	10088	Remove
<input type="text" value="SERVERNAME"/>	<input type="text" value="192.168.0.0"/>	<input type="text" value="10088"/>	<input type="button" value="Add"/>

Send data when the following string is found

- CR (carriage return)
- CR/LF (carriage return/line feed)
- Custom string

Strip string before sending

Send data after the following number of idle milliseconds

ms

**Figure 8: Wavetronix Serial to Ethernet setup**

## A.2. SmartSensor Advance Configuration

1. Ensure that the sensor is updated to Advance 3.2.0 software version.
2. Connect to the Sensor, open the Sensor Settings UI and open the Communication Tab. At the bottom of this tab ensure that Remove Multi-Drop Prefix is set to OFF. Click **OK**.
3. Open Channel-Alerts-Zones UI, Open Setup Output Communication.
4. In the Select trigger speed options area, use the dropdown next to **Port** to select the proper port to monitor for speed. This is usually the port that is not already selected in the top portion of this interface. For example, Figure 9 shows "Port 2" selected in the "Select port to transmit output:" field, so speed trigger port will be "1").
5. Also in the Select trigger speed options area, use the dropdown next to Channel to select "2". Complete the textbox next to Tag with the Signal ID of the intersection, and the detector channel number of this detector. (Example - Signal ID is "8403". The detector channel is "8". The tag must be a six-digit number, so the number in the Tag box must be "840308").
6. Click **OK**, Click the **Save** icon (the button that looks like a briefcase with a lightning bolt on it). When the save operation is complete, click **Close** and follow prompts to disconnect.

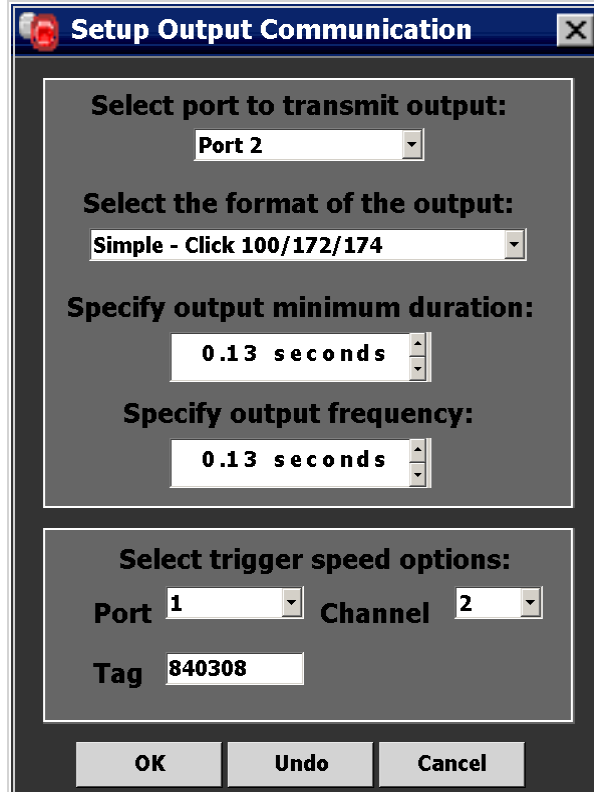


Figure 9: Wavetronix SmartSensor Advance Setup

## Appendix B. How to add a new measure

ATSPM has a modular architecture allowing the user to add new charts (measures) to the system. The directions below require Microsoft Visual Studio 2013 or later, and assume basic software development skills.

1. Open the MOE database in SQL Server Management Studio. Add an entry into the MetricTypes table with the name of your new chart.
2. Launch Visual Studio on the development machine and open the Signal Performance Metrics solution.
3. Create a class in MOE.Common -> Business -> WCFServiceLibrary that inherits from the MetricOptions class.
4. Add the [DataContract] attribute to this new class.
5. Mark any property required to build your class with the [DataMember] attribute so that it can be serialized and sent to the WCF service.
6. Create your business logic objects. Make sure that any new tables are created through Entity Framework. All new tables should have corresponding repositories found in MOE.Common -> Models -> Repositories.
  - a. If new tables are created a new Entity Framework migration will need to be created. Please see [https://msdn.microsoft.com/en-us/library/jj554735\(v=vs.113\).aspx](https://msdn.microsoft.com/en-us/library/jj554735(v=vs.113).aspx) for more information.
7. From the CreateMetric method in the MetricOptions class you created in step 3, call base.CreateMetric(), then load your business objects. This function should return a string array with the location of the images through IIS.
8. In the MOEWcfServiceLibrary project, open the IMetricGenerator class and add the following for your new MetricOptions class:  
[ServiceKnownType(typeof(MOE.Common.Business.WCFServiceLibrary.YourNewMetricOptions))]
9. In the SPM project, add a new partial view that takes your new MetricOptions class as the model.
10. In the SPM project DefaultChartsController class, add a line in the MetricOptions(int id) method that returns your new partial view.
11. In the SPM project DefaultChartsController class, add a method that accepts your new MetricOptions class as an argument. This class should open a new client to the metric generator service, pass your metric options to it and get back a string array of image locations. It should then return the MetricResults partial view with your populated string array as the model.
12. Modify Index.cshtml file found at SPM -> Views -> DefaultCharts. Add a line in the scripts section that uses Razor to build the url to the DefaultChartsController. This will ensure the url is correct wherever it is installed.
13. Modify the GetMetric.js script found at SPM -> Scripts. Add a function that collects the

options the user has selected from the web page and passes them to the DefaultChartsController method you created in step 11. Use the GetCommonValues() to add the base MetricOptions properties to the collection. Use the GetMetric() function to make the call to the DefaultChartsController.

14. Modify the GetMetric.js script found in SPM -> Scripts. Change the \$('#CreateMetric').click() function to call the function you created in the previous step.